

sni *mar*

Sistema Nacional de Informação do Mar

Preparation of integrated
geographic information for marine
and coastal water management

Aldino Santos de Campos
EMEPC

1. Setting the Scene

The SNIMar project

2. Building Blocks

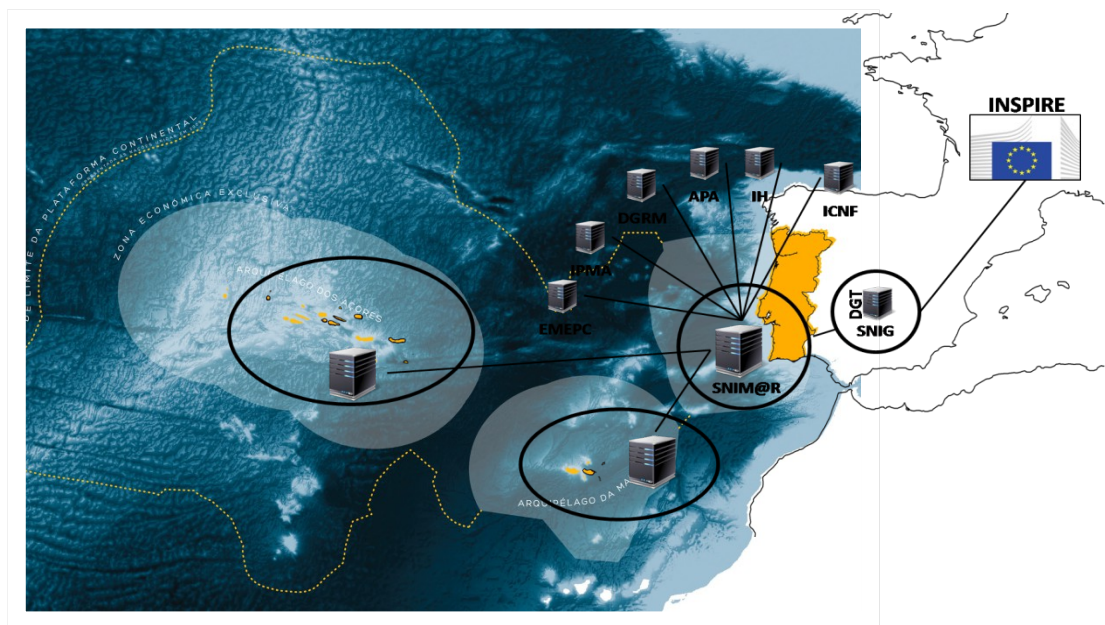
The geoportal

3. Project Implementation

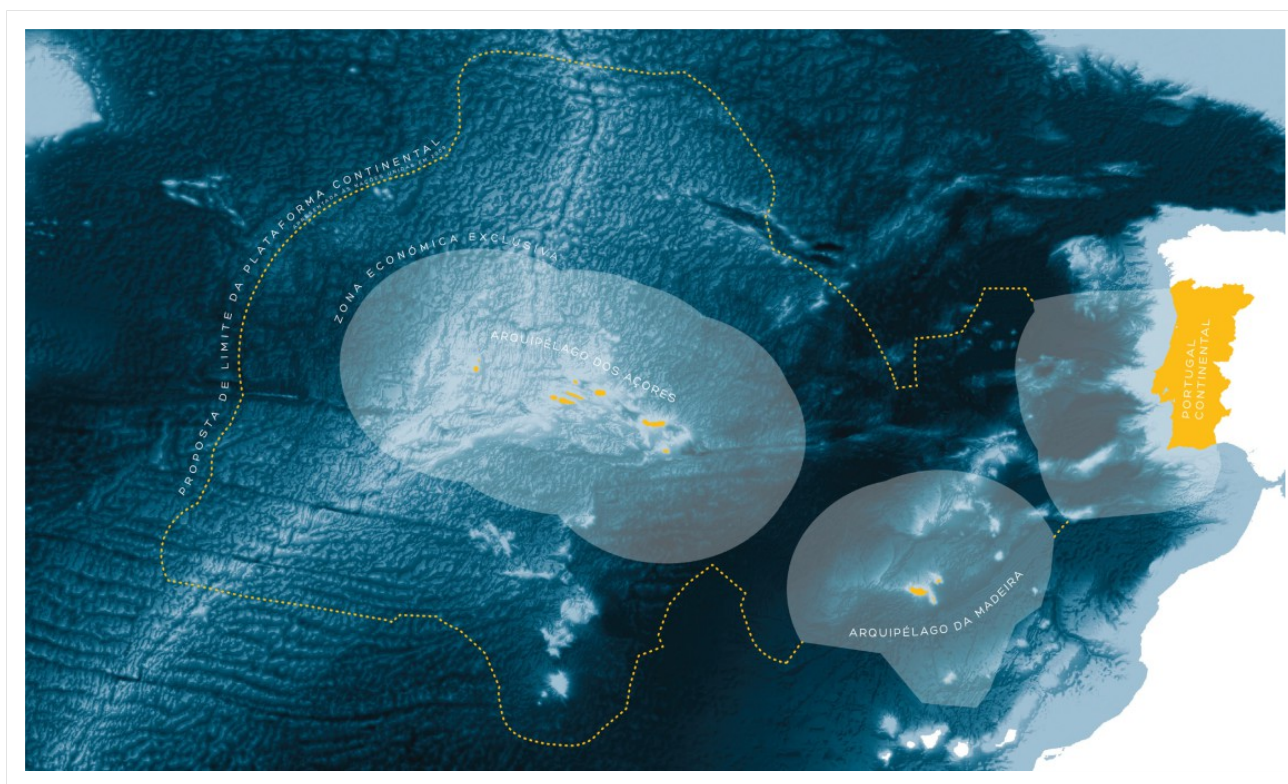
Project Outcomes
Status Report

4. Conclusions

What SNIMar is all about!!!



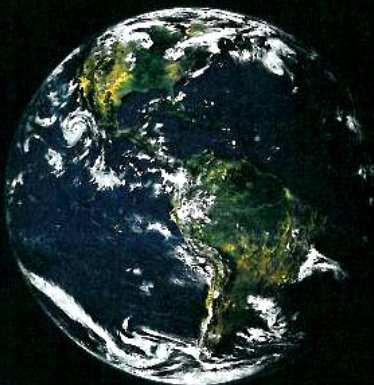
Defining a new geographic dimension to Portugal



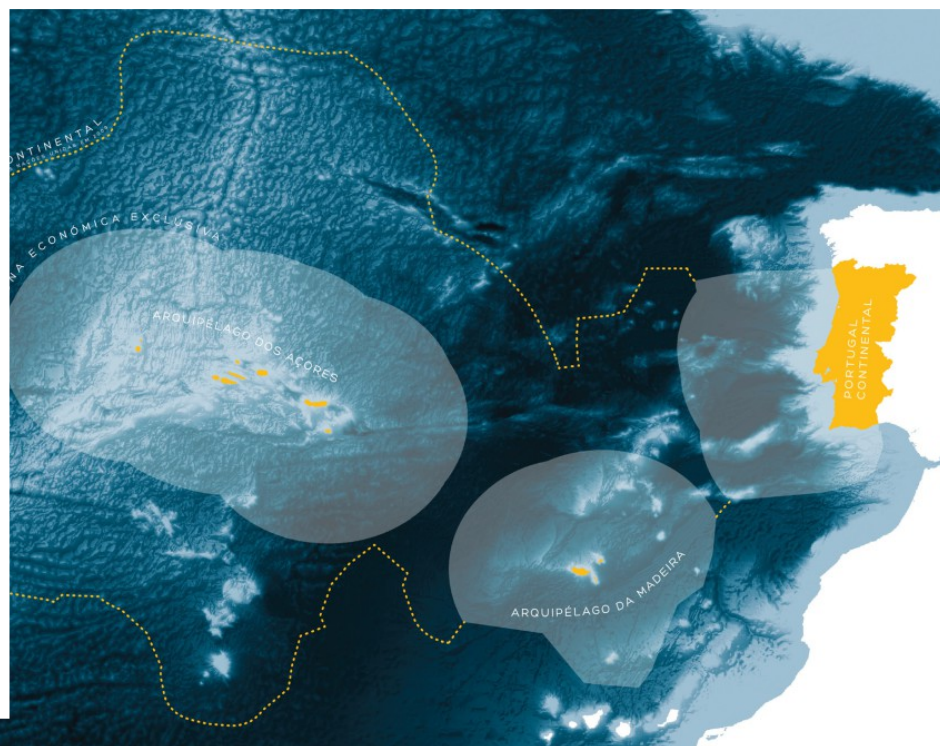
Defining a new geographic dimension to Portugal



30% land.
70% opportunity.

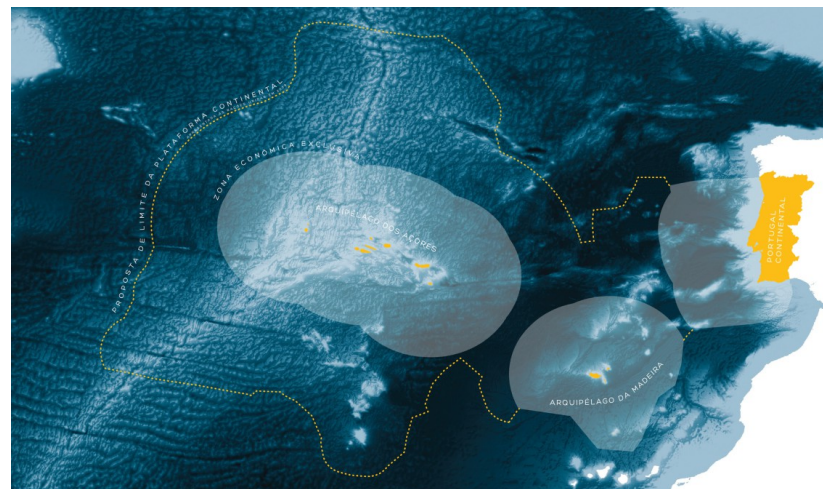


The deep sea holds the key to our future. The quest for food, energy, minerals and knowledge is creating a need for new technologies that enhance visualization.





Action plan



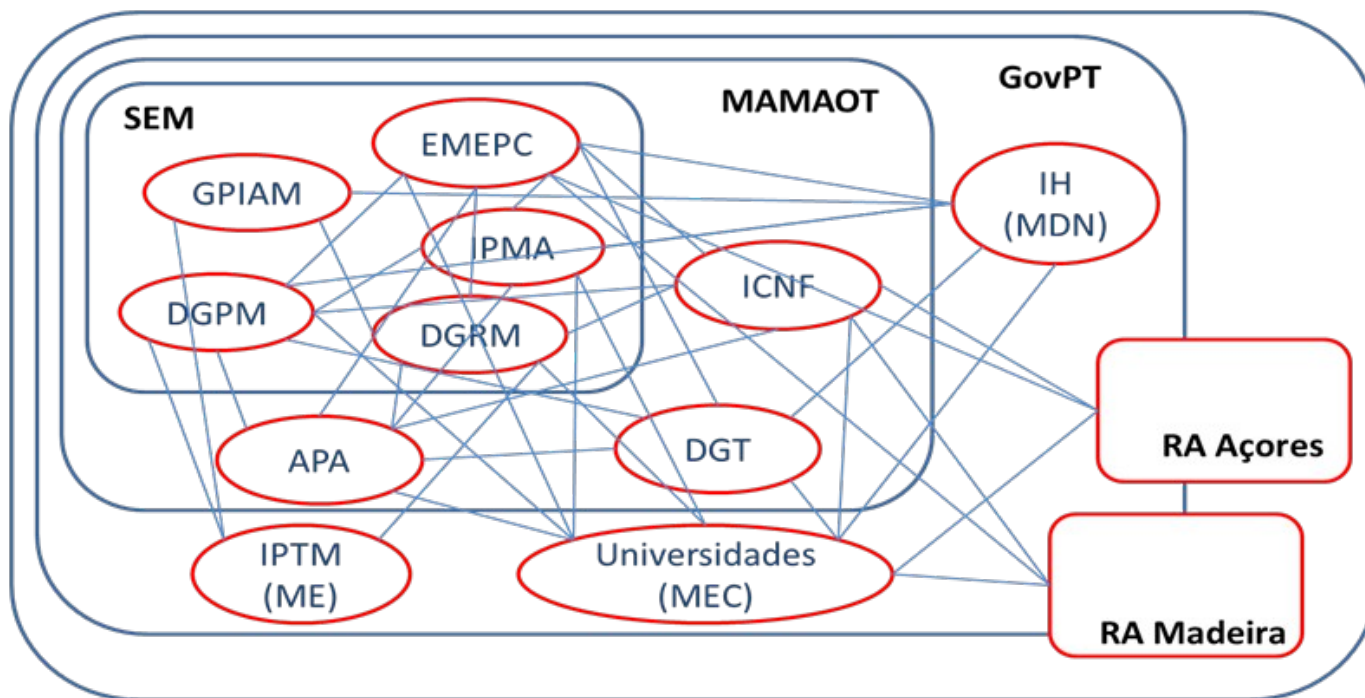
Sea of Opportunities

Sustainable decisions based on available and reliable information

To Make Opportunities Happen!!!

The initial setting...

Do we have the required data to sustainable decisions?
Where???



Predefined Project supported by EEA Grants : Preparation of integrated geographic information for marine and coastal water management.
(<http://www.eeagrants.gov.pt/>)

Framework: The Project results from Portuguese responsibility to implement the spatial data infrastructure in accordance with the Directive 2007/2/EC of the European Parliament and of the Council of 14 March 2007 establishing an Infrastructure for Spatial Information in the European Community (INSPIRE)

Acting in accordance with the national coordinator - Sistema Nacional de Informação Geográfica (SNIG) of Directorate-General of Territory Development (DGT) as National Focal Point to the INSPIRE Geo-Portal.

SNIMar Major Goals

To develop a Marine Spatial Data Infrastructure (MSDI) to increase capacity of assessing and predicting environmental status in marine waters

Strengthening the infrastructure for spatial information and integration with existing reference registers (National Service of Geographic Information)

Significant reduction of time for obtaining high quality thematic information

Increasing availability of services provided on-line by public administration

Coordination: Task Group for the Extension of the Continental Shelf (Resolution of Council of Ministers nº3/2011)

Partners: Norwegian Mapping Authority; National Land Survey of Iceland and Instituto Português do Mar e da Atmosfera

Project schedule: 22 months;
Started: June 2014; Ends: April 2016

Constraints to move on.... Human Resources & Tech (HS W)

Overall Budget: 2.35 M€

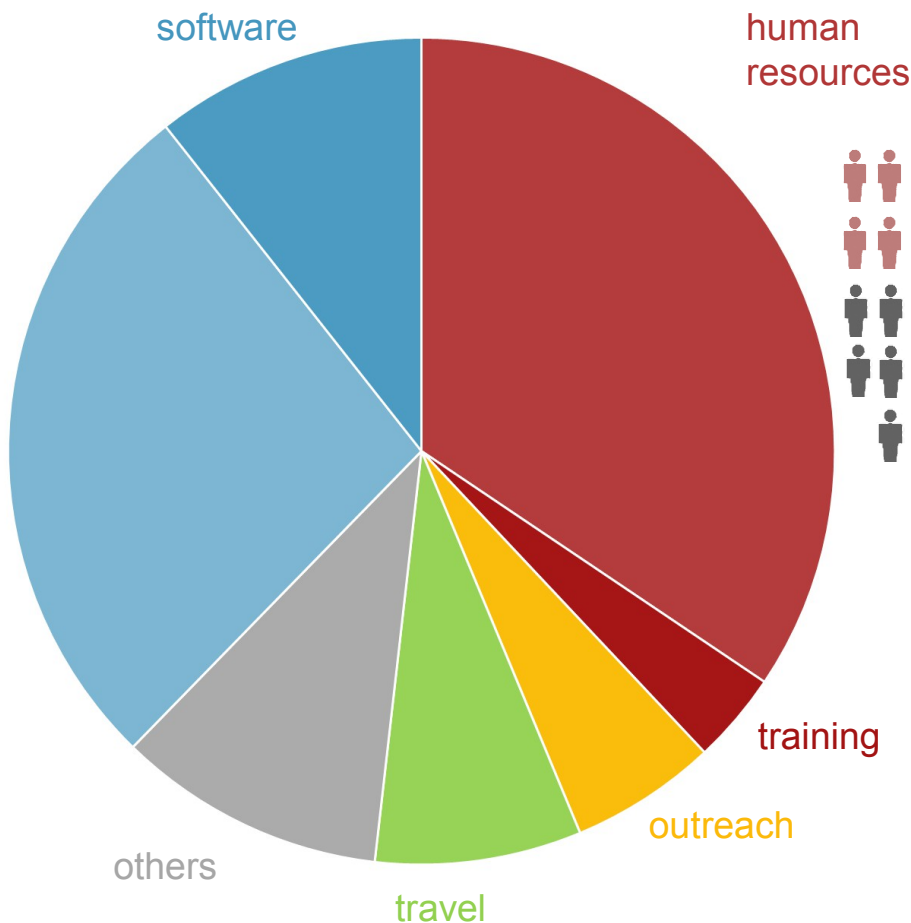
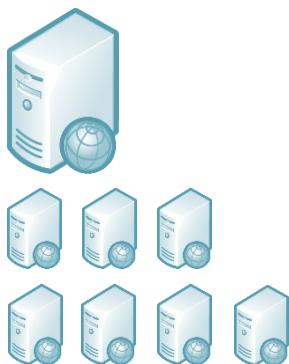


2 M€



0.35 M€

hardware



Promoter:



Donor partners:



National partner:



Program operator:



Partner entities:



INSTITUTO DOM LUIZ
LABORATÓRIO ASSOCIADO



REGIÃO AUTÓNOMA DA MADEIRA



A JOINT VENTURE OF RENOWNED ENTITIES



WP	Task	Description	Coordination
#0	Project Management	Project management	EMEPC
#1	Policies	Institutional arrangements and policies	DGT
#2	Technical Framework	Technical Framework (hardware, software, network, etc.)	IPMA
#3	GI & Metadata	Contents, Specs, INSPIRE Data harmonization	IDL/FCUL
#4	Services & Geoportal	Catalog Service (Discovery), View (Web Mapping Service) e Download Service (Web Feature Service e File based)	EMEPC
#5	Outreach	Project promotion and outreach	EMEPC



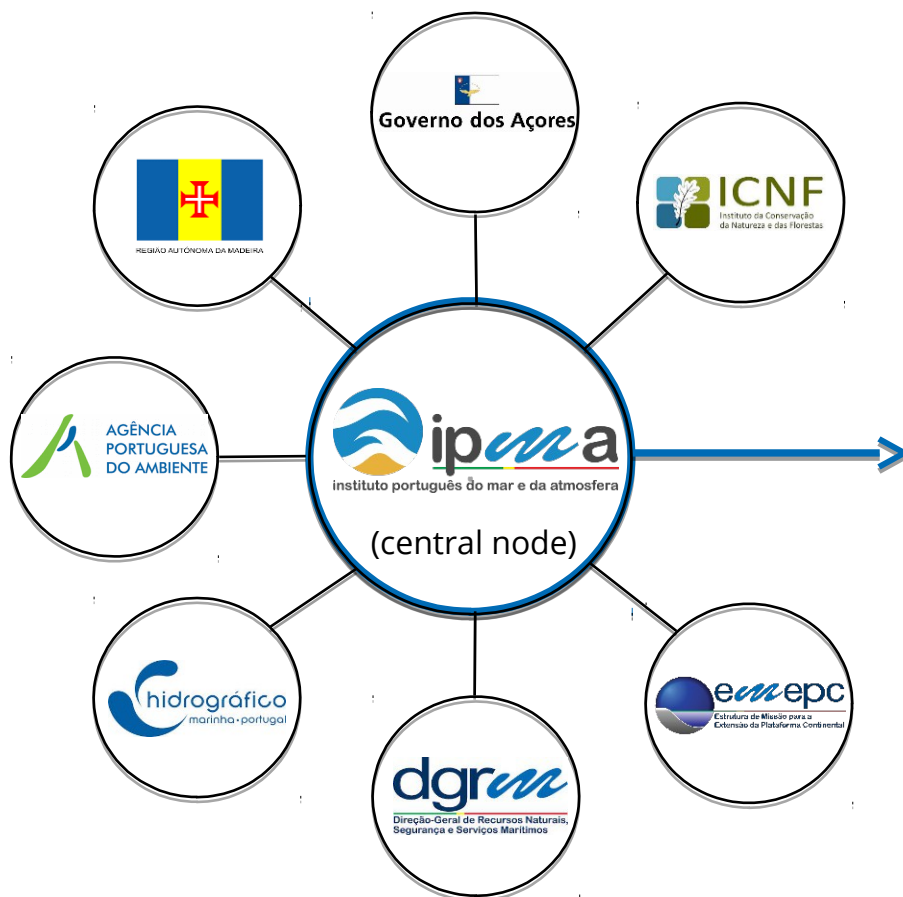
**Harmonize
&
Categorize***



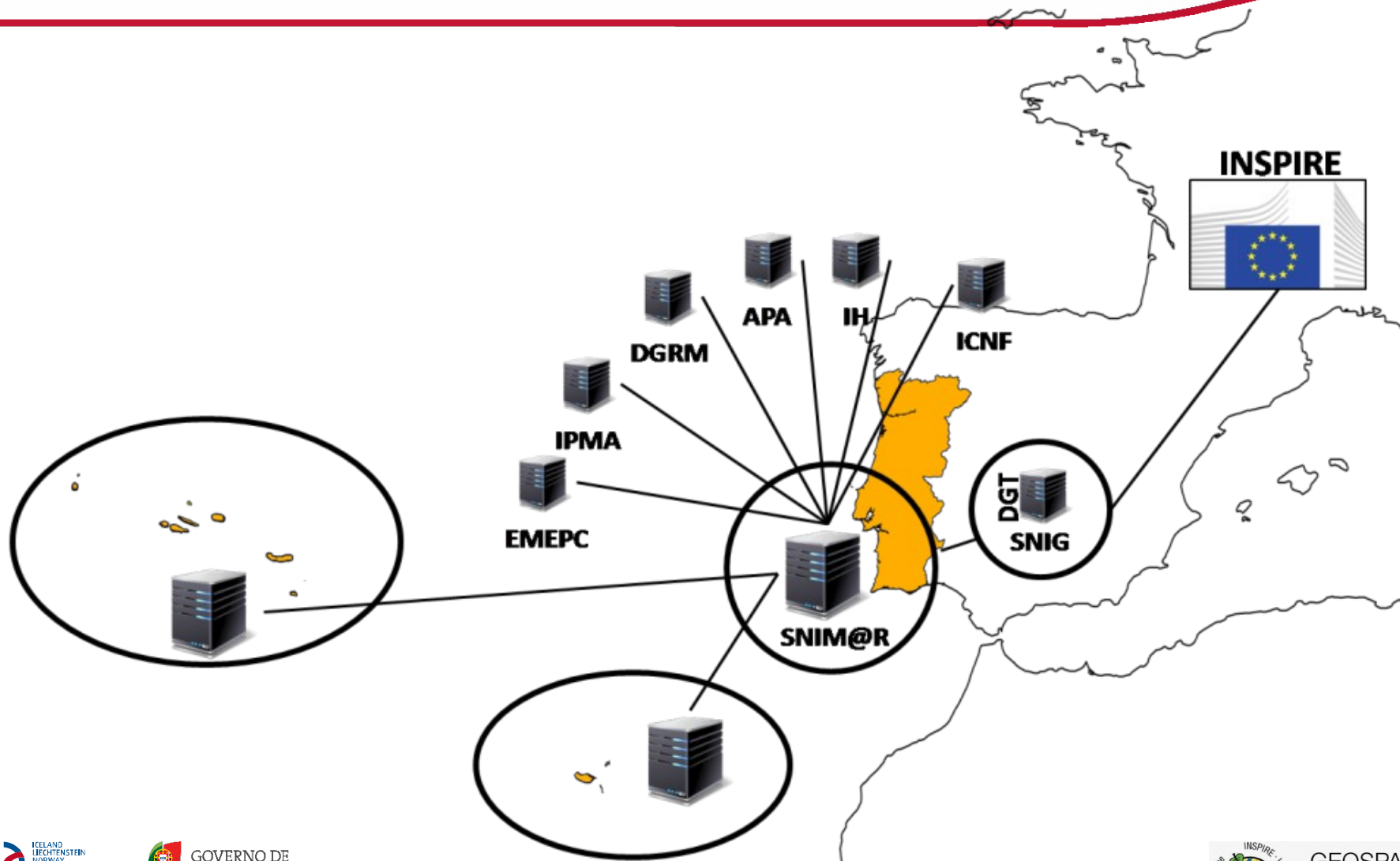
Catalog



Search



Geoportal
sni mar
Sistema Nacional de Informação do Mar



- A common data policy among all the entities will be defined
- A thematic Annex related to marine environment will be proposed to DG MARE (EU) and INSPIRE
- Associate entities will benefit:
 1. A better use and sharing of existing marine information inside of each entity;
 2. Increasing the visibility;
 3. Increasing new partnerships.



Policies

- Joint declaration signature;
- Conception of data sharing policies principles.

IT

- Conception of IT architecture.

Metadata Harmonization

- Data survey to all institutes;
- SNIMAR Metadata Profile defined;
- Datasets related keywords harmonisation.

Services & Geoportal

- Collaborative Keywords platform;
- Metadata editor, integrates Collaborative keywords contents.

Outreach

- Website – www.snimar.pt;
- Flyer + briefcases;
- Roll-ups;
- Educational materials.

What SNIMar is all about!!!

More than a GeoPortal, SNIMar is...

- Creating opportunities;
- Sharing and Integrating;
- Networking and setting transparency among all marine related users.

SNIMar:

A geoportal for share, search and access marine related data

Marine information at one's fingertips...